

# Aquatic Macroinvertebrate ID Key



## Legs, tails or feelers



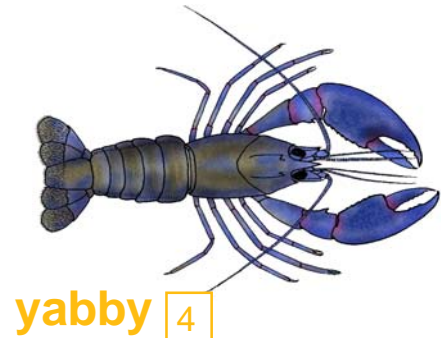
**caddisfly larva** 8



**stonefly larva** 10



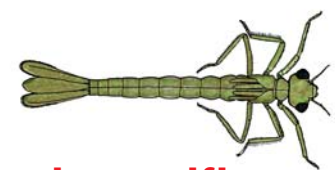
**mayfly larva** 9



**yabby** 4

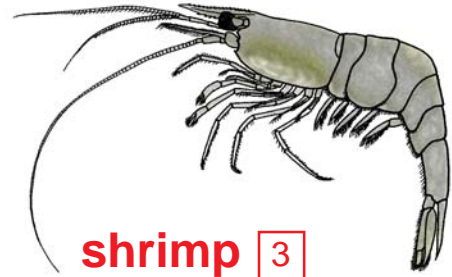


**dragonfly larva** 3



**damselfly larva** 3

## Swims fast



**shrimp** 3



**diving beetle** 2



**water boatman** 2

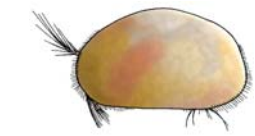


**back swimmer** 1



**scud** 3

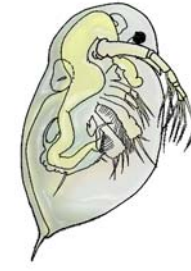
## Tiny



**seed shrimp** NR



**copepod** NR

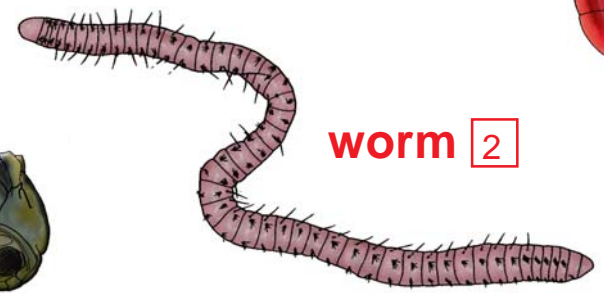


**water flea** NR

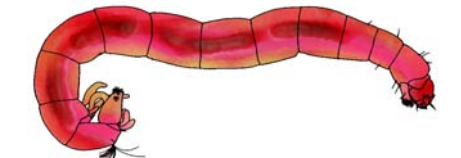


**water mites** 7

## Wriggles



**worm** 2



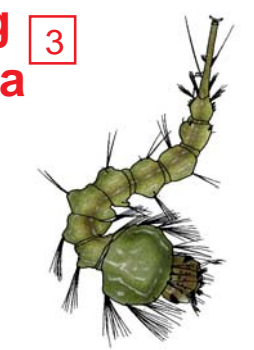
**non-biting midge larva** 3



**mosquito pupa** 1



**biting midge larva** 4



**mosquito larva** 1

## Slides



**freshwater snail** 1



**leech** 1



**flatworm** 2

### Pollution Sensitivity\*:

- NR Not rated
- 10-8 Very sensitive
- 7-6 Sensitive
- 5-4 Tolerant
- 3-1 Very tolerant

Sensitivity ratings from SIGNAL2 system in "New sensitivity grades for Australian river macroinvertebrates. Bruce C. Chessman. Marine and Freshwater Research, 2003, 54, 95-103."